

# Track-It™

## Barometric Pressure/Altitude/Temperature Logger

### Description

The Track-It™ Barometric Pressure/Altitude/Temperature Data Logger is a battery powered stand alone compact data logger that records up to 64,000 samples of Barometric Pressure and/or Temperature data. The unit is easily configured using the included Track-It™ Software. Simply plug the logger into an open USB port on your PC and the software automatically identifies the logger. Configure the unit to start and stop recording immediately, at a predetermined time and date, or only when an alarm condition is sensed. The sample storage rate can be set from 1 sample every 2 seconds up to 1 sample every 24 hours. The on board data storage is non-volatile so data will not be lost in the event of a depleted battery. Barometric (also known as atmospheric) pressure can be displayed in a variety of engineering units. It can be used as an altimeter. Information displayed on the LCD is



user selectable and can be sequenced by pressing the logger button. There is a multicolored LED indicator to notify user of alarms or general activity. A splash proof protective cover protects the logger when in use. Additionally, the logger can be used to record external inputs using optional Track-It DC voltage or DC current modules.

### Features

- Up to 64,000 samples per record
- Small compact size
- Integral USB interface (no custom cable!)
- Free Android Transporter App!
- Free Windows software!
- Long life battery option (Extends Temp range to -40 to 185°F/-40 to 85°C)
- Accepts external DCV/DCI inputs
- High accuracy and repeatability
- Multiple user selectable displays
- N.I.S.T. calibration available
- Alarm set points
- Multiple engineering units
- Protective rubber boot included

### Typical Uses

- Weather
- Environmental Comfort
- Health and Well Being
- Building Management
- Healthcare Facilities
- Laboratory
- Altitude
- Manufacturing
- Transportation
- Aviation



# Track-It™

## Barometric Pressure/Altitude/Temperature Logger

### Specifications

#### General

<b>Record:</b>	<b>Sample Rates:</b> User configured 1 every 2 seconds up to 1 every 24 hours <b>No. of Samples:</b> 32,000 or 64,000 (depends on setup)
<b>Record Trigger:</b>	Two independent triggers. Multiple trigger modes: Instantaneous, button control, on alarm, time and date (start and stop), day of week
<b>Record Mode:</b>	Fill to end of memory, cyclic, number of samples, time duration
<b>Display:</b>	4 digit LCD User programmable: Indication of data value, eng units, alarms, record mode, battery condition, time/date, memory used. <b>Logger display units:</b> kPa, PSI, bar, mbar, Atm, inches Hg, mm Hg, feet, meters. Max logger display: 9999. Users can zero display at any point (offset) and show relative increase/decrease
<b>LED:</b>	User programmable: Indication of alarms, recording, triggered
<b>Button:</b>	User programmable: View display, record on/off, reset alarms
<b>Alarms:</b>	2 user programmable alarms. High or Low
<b>Communication:</b>	Direct USB connection
<b>Software:</b>	Track-It™ Software—Program device, view data (historic or real time), export to Excel™. Simple and advanced modes.
<b>Battery:</b>	Coin Cell Battery: Lithium CR2032 Life: 1 year @ 1 minute sample rate Hi Energy Battery: EF651625 Life: 3 years @ 1 minute sample rate
<b>Dimensions:</b>	3.66" (9.29cm)L x 0.75" (1.91cm)H x 1.16" (2.95cm)W

#### Measurement

<b>Pressure Range:</b>	30 to 120 kPa (4.4 to 17.4 PSI) Absolute Altitude: 30,000 ft. (9144m)
<b>Accuracy:</b>	± 0.1 kPa Typ 70-115 kPa 0-50°C ± 0.3kPa max -40-85°C ± 0.5kPa max
<b>Resolution:</b>	0.01 kPa displayed 0.005 kPa recorded
<b>Temperature Range:</b>	-30 to +70°C / -22 to 158°F Standard Battery -40 to +85°C / -40 to 185°F Long Life Battery
<b>Accuracy:</b>	±0.75°C
<b>Resolution:</b>	0.1°C displayed 0.01°C recorded
<b>Clock Accuracy:</b>	±1 minute/year

#### Ordering Information

Model	Description	Part No.
BPTemp Track-It	Logger w/display, standard battery	5396-0321
NIST BPTemp	Logger w/ NIST certificate	5396-0321-CAL
BPTemp Track-It LB	Logger w/display, long life battery	5396-0322
NIST BPTemp	Logger w/ NIST certificate	5396-0322-CAL
Ext 5 Volt Input	Analog input 5 Volt Module	5396-0503
Ext 20 mA Input	Analog input 20mA Module	5396-0505

Other External Input modules available. Check with Factory.

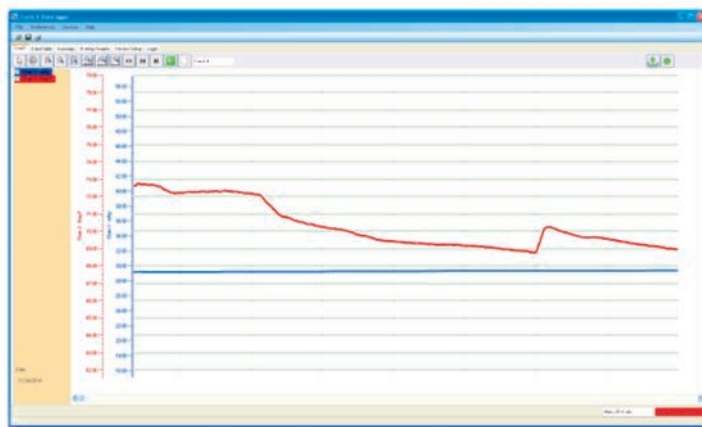


### Track-It™ Software

Track-It™ Software is a powerful Windows based software package that is included with every Track-It™ Data Logger. It allows for easy setup, retrieval, interpretation and export of the recorded data. Simply connect your Track-It™ data logger to an open USB port and begin communicating immediately.

Point and click to select your sample interval, alarm set points, engineering units, start recording triggers and LCD Displays.

View a numerical data table or graphical representation of data readings relative to time. Use the graph tools such as zoom, cursor, min and max to examine and analyze the record. Advanced analysis such as **MKT** calculations are standard for temperature readings. Track-It™ Software turns your PC into a real time data acquisition system by allowing you to stream graphical or tabular data directly to your PC. Export stored data into an Excel spreadsheet.



### Track-It™ Transport App



Track-It™ Transport is a free Android Application that allows you to use your Android device to start and stop recording and transfer data using a USB On-the-Go cable. Available on Google Play.



**AVIBIA GmbH**  
Lepperhammer 5  
51766 Engelskirchen  
Tel.: +49 (0)2263 96907-33  
Fax.: +49 (0)2263 96907-35  
info@avibia.de