

1 Install USB driver and Track-It™ Software

IMPORTANT! Do NOT plug the Track-It Data Logger into the USB port until AFTER the USB Drivers and Track-It Software have been installed.

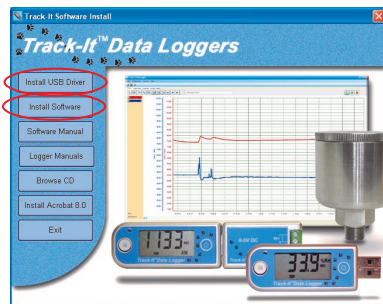
Download Track-It Data Logger Software from:

http://www.monarchinstrument.com/Software/Track-It_Software.zip

Unzip the downloaded file to a local directory on your PC.

Double click “CD_Start.exe”. This will launch the Track-It Data Loggers Splash screen shown to the right.

1. Click “Install the USB Driver” and follow the prompts. Click “Continue Anyway” if you see the a message about software installation.
2. Click “Install Software” and follow the instructions to complete the installation. The Software is now installed and ready to use.
3. Logger and Software manuals may also be accessed here



2 Install data logger battery (if required)

Install the battery that was supplied with your Track-It™ data logger. Refer to the diagrams below for installation. **Certain models will have battery pre-installed.**

Remove threaded end cap with coin and insert battery as shown



Rugged Temp
3.6V 1/2AA Lithium
High Temperature

Remove threaded cap and insert battery as shown



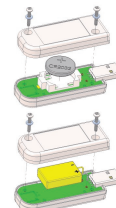
**Pressure/
Temp**
3.6V 1/2AA

Remove threaded bezel ring and circular cover on back of logger. Insert battery as shown



Pressure/Temp with Display
3.6V 1/2AA

Batteries in “Thumb Drive” type loggers are pre-installed

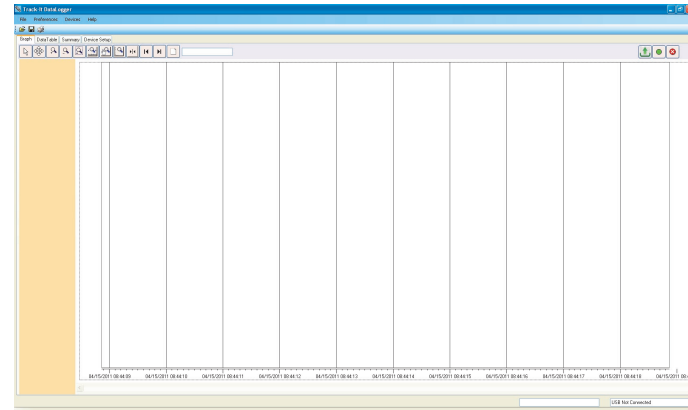


**Temp,
RHTemp, DC I/
V, AC Event,
Baro/Temp**
3V CR2032 coin
cell or 3.6V
EF651625
(LTC-7PN)

3 Connect data logger and Start Track-It™ Software

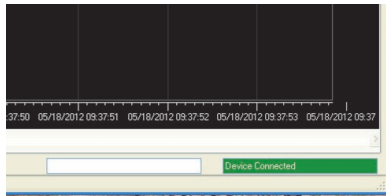
Plug the Track-It logger into an available USB port on the PC. Some models plug directly into the USB port others connect to the USB port with a cable (which is supplied). If the Found New Hardware Wizard appears, follow the prompts to complete the installation.

Start the Track-It Software by double clicking the Track-It icon (shown at right) on your PC or from the Start menu.



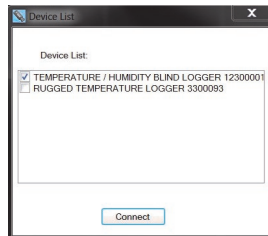
4 Connect to your data logger

If the USB drivers installed properly you will see “Device Connected” displayed in the lower right hand corner of the Track-It™ Software window.



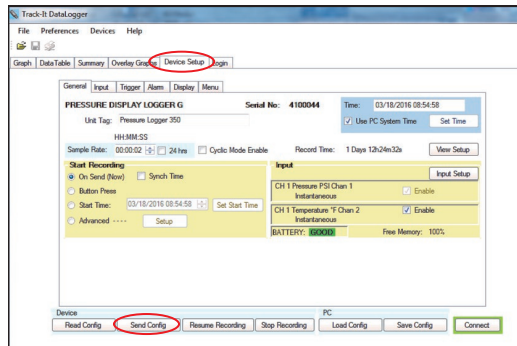
You can now begin using Track-It™ Software to configure your data logger and/or view recorded data.

Track-It™ Software will list all Track-It™ Data Loggers connected to your PC. To view the list and switch between loggers click on Devices then Device List.




5 Configure and start logging data

Select the “Device Setup” tab as shown. The software will automatically retrieve and display the data logger configuration.



Review default factory configuration settings and make any necessary changes - sample rates, triggers, alarms etc. Be sure that the time and date is set properly.

Click the “Send Config” button under the Device Configuration section of the window. **Your data logger is now operational!**

 **MONARCH INSTRUMENT**
15 Columbia Drive
Amherst, NH 03031

Ph: 603-883-3390
www.monarchinstrument.com

Rev. 1.6

 **Track-It™ Data Loggers**



QUICK START GUIDE

Para la traducción española, ver CD
Für die deutsche Übersetzung, siehe CD
Pour la traduction française, voir le CD
Per la traduzione italiana, vedi CD